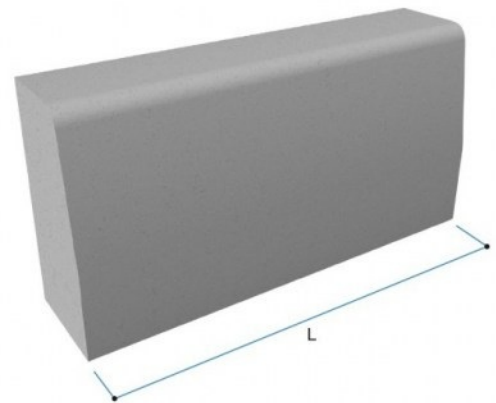
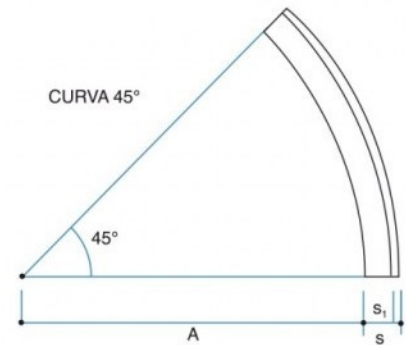
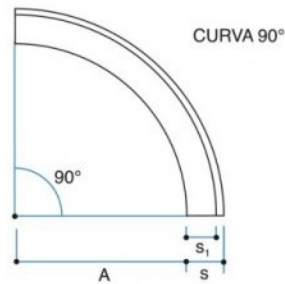
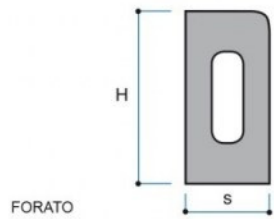
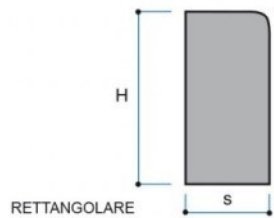
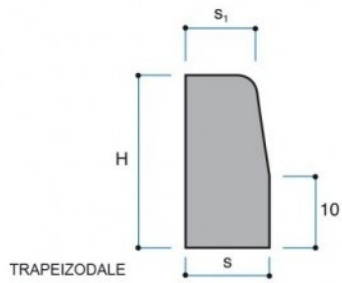


CORDOLI CORDOLO DI CLS (UNI EN 1340)



Voce di capitolato

Cordolo stradale a sezione trapezoidale, rettangolare o forato (foro longitudinale di alleggerimento), realizzato in calcestruzzo vibrocompresso.

| Codice | Tipo | Descrizione | P.V.R. | Peso Kg | Dim. pedana cm | Pezzi su pedana | Peso pedana Kg | Portata motrice pz. | Portata autotreno pz. |
|----------|-----------|--------------------------------|--------|---------|----------------|-----------------|----------------|---------------------|-----------------------|
| CA0608AN | 6-8R100 | Curva 6-8x25 raggio 100 | V | 33 | 100x100x75 | 30 | 990 | 300 | 720 |
| CA0810AN | 8-10R100 | Curva 8-10x25 raggio 100 | V | 45 | 100x100x75 | 24 | 1,080 | 240 | 576 |
| CA1012AN | 10-12R100 | Curva 10-12x25 raggio 100 | V | 53 | 100x100x75 | 21 | 1,113 | 210 | 504 |
| CA1215AN | 12-15R100 | Curva 12-15x25 raggio 100 | V | 65 | 100x100x75 | 18 | 1,170 | 180 | 432 |
| CC0608CN | 6-8R50 | Curva 6-8x25 raggio 50 | V | 34 | 100x100x75 | 30 | 1,020 | 300 | 720 |
| CC0810CN | 8-10R50 | Curva 8-10x25 raggio 50 | V | 42 | 100x100x75 | 24 | 1,008 | 240 | 576 |
| CC1012CN | 10-12R50 | Curva 10-12x25 raggio 50 | V | 49 | 100x100x75 | 21 | 1,029 | 210 | 504 |
| CC1215CN | 12-15R50 | Curva 12-15x25 raggio 50 | V | 69 | 100x100x75 | 18 | 1,242 | 162 | 414 |
| CP0608PN | 6-8 | Cordolo in cls 6-8x25x100 | V | 40 | 100x100x75 | 30 | 1,200 | 300 | 720 |
| CP0810PN | 8-10 | Cordolo in cls 8-10x25x100 | V | 47 | 100x100x75 | 24 | 1,128 | 240 | 576 |
| CP1012PN | 10-12 | Cordolo in cls 10-12x25x100 | V | 56 | 100x100x75 | 21 | 1,176 | 210 | 504 |
| CP1215PN | 12-15 | Cordolo in cls 12-15x25x100 | V | 68 | 100x100x75 | 18 | 1,224 | 180 | 414 |
| CP1518PN | 15-18 | Cordolo in cls 15-18x25x100 | V | 94 | 100x100x75 | 15 | 1,410 | 120 | 300 |
| CP1820PN | 18-20 | Cordolo in cls 18-20x25x100 | V | 107 | 100x100x75 | 15 | 1,605 | 120 | 270 |
| CV2025FN | F20 | Cordolo in cls forato 20x25x90 | V | 84 | 100x100x75 | 15 | 1,260 | 150 | 330 |
| RE0825PN | R8 | Cordolo in cls 08x25x100 | V | 44 | 100x100x75 | 30 | 1,320 | 270 | 660 |
| RE1025PN | R10 | Cordolo in cls 10x25x100 | V | 50 | 100x100x75 | 27 | 1,350 | 243 | 594 |